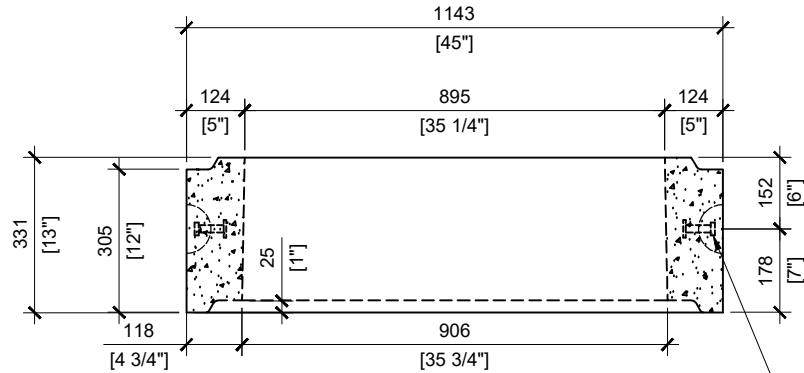


TOP VIEW  
SCALE: 1/16

**GENERAL NOTES**

1. DELIVERY IS MADE BY CRANE-EQUIPPED TRUCKS
2. MIN OVERHEAD CLEARANCE OF 18FT IS REQUIRED
3. ALL UNITS MUST BE HANDLED WITH PROPER LIFTING EQUIPMENT (I.E. SPREADER BAR)
4. DESIGNED FOR A MAXIMUM FILL DEPTH OF 1000mm, NO MINIMUM FILL DEPTH AND 12kPa VEHICLE LOADING.

2 1/2" LIFTING ANCHOR  
4 REQUIRED (TYP.)



12" RISER FRONT VIEW  
SCALE: 1/16

2 1/2" LIFTING ANCHOR  
4 REQUIRED (TYP.)



**MANUFACTURED:**  
LINDSAY, ON  
1-800-655-3430

**CONCRETE:** 35MPa at 28 days/5000PSI    **WEIGHT OF 12" RISER:** 814lbs/369kg  
**AIR ENTRAINMENT:** 5-8%  
**REINFORCEMENT:** STEEL TO CSA CAN  
A23.1 /A23.3 G30.18 Fy=400MPa

**DRAWN BY:**  
PRASHAN

**DATE:**  
JUL/2024

36"X36" CONCRETE RISER 12" HIGH SHIPLAP

12" RISER - 35 3/4" X 35 3/4" INTERNAL OPENING