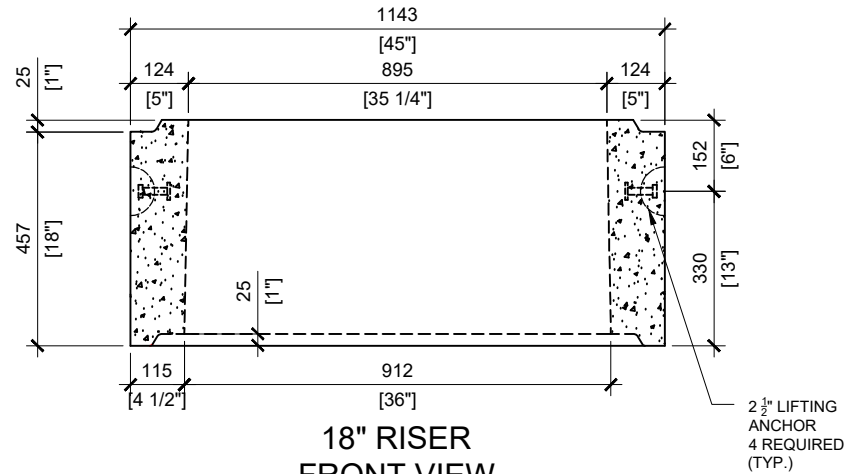


TOP VIEW  
SCALE:1/16



18" RISER  
FRONT VIEW  
SCALE:1/16

**GENERAL NOTES**

1. DELIVERY IS MADE BY CRANE-EQUIPPED TRUCKS
2. MIN OVERHEAD CLEARANCE OF 18FT IS REQUIRED
3. ALL UNITS MUST BE HANDLED WITH PROPER LIFTING EQUIPMENT (I.E. SPREADER BAR)
4. DESIGNED FOR A MAXIMUM FILL DEPTH OF 1000mm, NO MINIMUM FILL DEPTH AND 12kPa VEHICLE LOADING.



MANUFACTURED:  
LINDSAY, ON  
1-800-655-3430

CONCRETE: 35MPa at 28 days/5000PSI    WEIGHT OF 18" RISER: 1,206lbs/547kg  
AIR ENTRAINMENT: 5-8%  
REINFORCEMENT: STEEL TO CSA CAN  
A23.1 /A23.3 G30.18 Fy=400MPa

DRAWN BY:  
PRASHAN

DATE:  
JUL/2024

36"X36" CONCRETE RISER 18" HIGH SHIPLAP

18" RISER - 36" X 36" INTERNAL OPENING