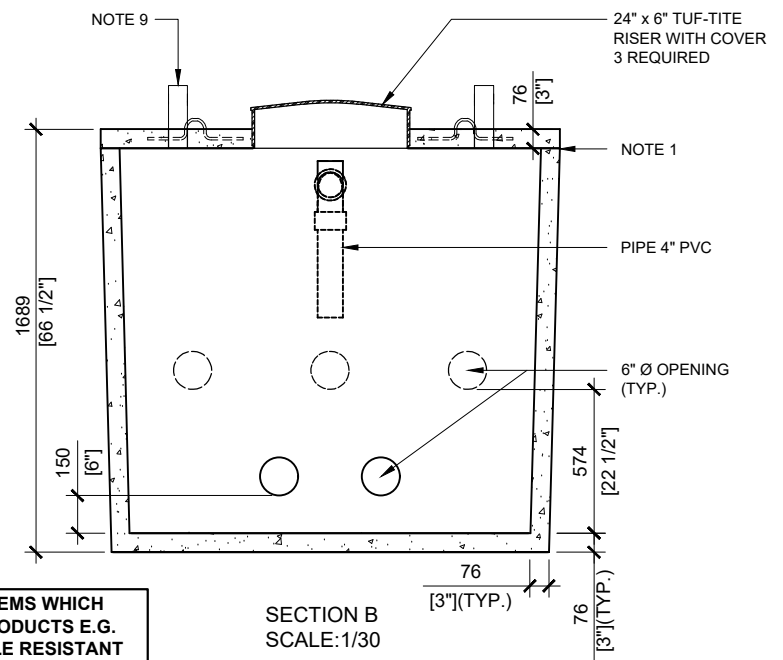
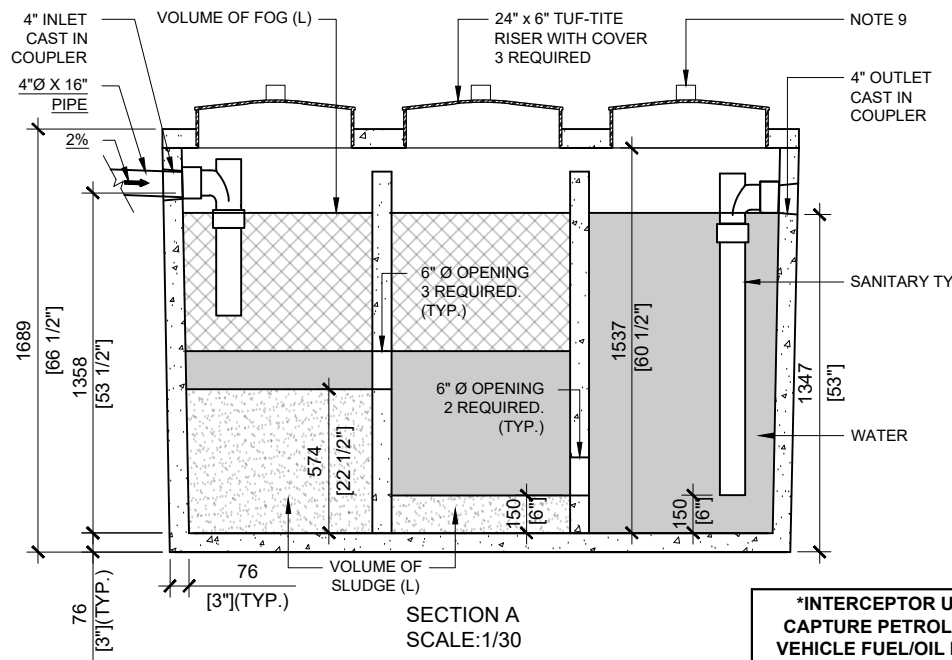


MAXIMUM FLOW RATE: 53L/min.
FOR THE SEPARATION OF OIL AND GREASE.

GENERAL NOTES:

1. UNITS ARE SEALED WITH AN OIL RESISTANT BUTYL TAPE AT THE JOINTS (CONSEAL CS-440)
2. DELIVERY IS MADE BY CRANE-EQUIPPED TRUCKS
3. EXCAVATION MUST BE READY, SAFE AND ACCESSIBLE FOR UNLOADING FROM THE REAR OF THE TRUCK.
4. MIN OVERHEAD CLEARANCE OF 18FT (5.5 METRES) IS REQUIRED
5. ALL UNITS MUST BE HANDLED WITH PROPER LIFTING EQUIPMENT.
6. MAXIMUM BURIAL DEPTH = 1 METRE IN FIRM SOIL AWAY FROM ANY VEHICULAR TRAFFIC
7. NOT INTENDED FOR STORMWATER APPLICATIONS.
8. CSA PERFORMANCE DATA PARAMETERS:
WATER = 23° (+/- 2°C)
OIL = 0.92 (+/- 0.01) SPECIFIC GRAVITY AT 20°C
9. 3" DIAMETER PVC PIPING FOR VENT
6 REQUIRED. ONLY 3 OPERATIONAL AT ONE TIME



INTERCEPTOR UNITS FOR SYSTEMS WHICH CAPTURE PETROLEUM BASED PRODUCTS E.G. VEHICLE FUEL/OIL REQUIRE NITRILE RESISTANT COUPLERS FOR INSTALLATION WITH THE PVC PIPES TO PERMIT TANK SETTLING AND MOVEMENT



MANUFACTURED:
BROOKLIN, ON
1-800-655-3430

CONCRETE: 35MPa / 5,000PSI
AIR ENTRAINMENT: 5-8%
REINFORCEMENT : STEEL TO CSA CAN
A23.1 / A23.3. G30.18 Fy=400MPa

UNIT WEIGHT: 11,390lbs / 5,170kg
CPA CERTIFIED
MEETS CAN/CSA-B66
AGINP

DRAWN BY:
N.CHAN

DATE:
MAR/2021

MODEL 100 GREASE/OIL/SEDIMENT INTERCEPTOR

4,400 LITRES
MAXIMUM FLOW RATE: 53 L/MINUTE