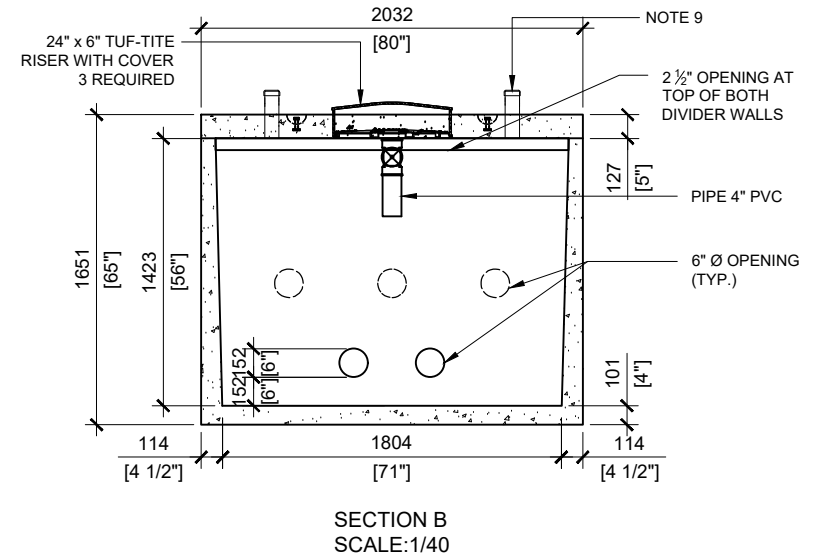
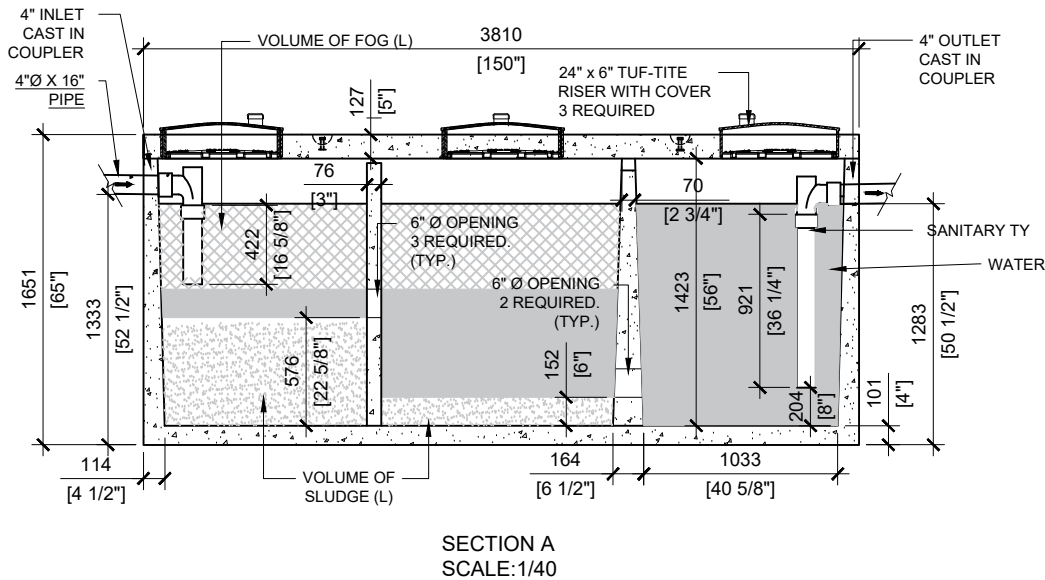


\*MAXIMUM FLOW RATE: 90L/min.\*  
FOR THE SEPARATION OF OIL AND GREASE.

**GENERAL NOTES:**

1. UNITS ARE SEALED WITH AN OIL RESISTANT BUTYL TAPE AT THE JOINTS (CONSEAL CS-440)
2. DELIVERY IS MADE BY CRANE-EQUIPPED TRUCKS
3. EXCAVATION MUST BE READY, SAFE AND ACCESSIBLE FOR UNLOADING FROM THE REAR OF THE TRUCK.
4. MIN OVERHEAD CLEARANCE OF 18FT (5.5 METRES) IS REQUIRED
5. ALL UNITS MUST BE HANDLED WITH PROPER LIFTING EQUIPMENT.
6. MAXIMUM BURIAL DEPTH = 1 METRE IN FIRM SOIL AWAY FROM ANY VEHICULAR TRAFFIC
7. NOT INTENDED FOR STORMWATER APPLICATIONS.
8. CSA PERFORMANCE DATA PARAMETERS:  
WATER = 23° (+/- 2°C)  
OIL = 0.92 (+/- 0.01) SPECIFIC GRAVITY AT 20°C
9. 3" DIAMETER PVC PIPING FOR VENT 6 REQUIRED. ONLY 3 OPERATIONAL AT ONE TIME.
10. TUF-TITE SAFETY LIDS INSTALLED IN ALL OPENING AS PER CSA-B66-21



MANUFACTURED:  
LINDSAY, ON  
1-800-655-3430

CONCRETE: 35MPa at 28 days/5000PSI  
AIR ENTRAINMENT: 5-8%  
REINFORCEMENT: STEEL TO CSA CAN  
A23.1 / A23.3 G30.18 Fy=400MPa

UNIT WEIGHT: 20,524lbs / 9,309kg  
TANK: 15,177lbs / 6,884kg  
LID: 5,347lbs / 2,425kg  
CPA CERTIFIED  
MEETS CAN/CSA-B66 "AGINP"

DRAWN BY:  
SR  
DATE:  
JAN/2024

**MODEL 165** GREASE/OIL/SEDIMENT INTERCEPTOR  
7500 LITRES  
MAXIMUM FLOW RATE: 90 L/MINUTE