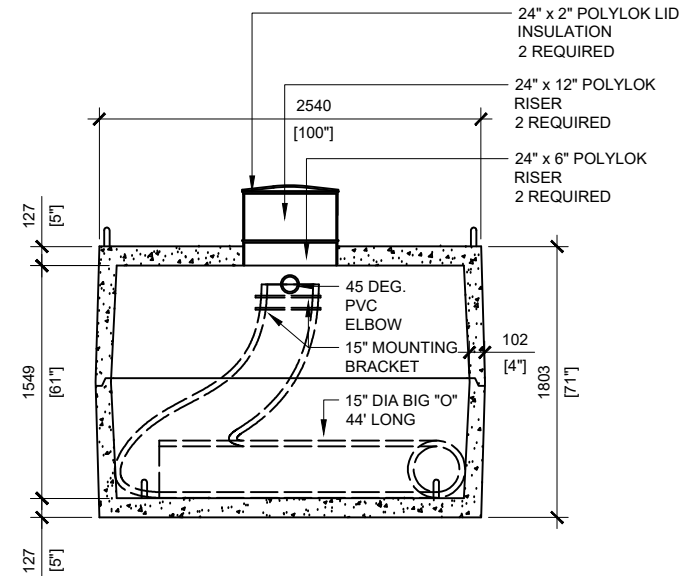
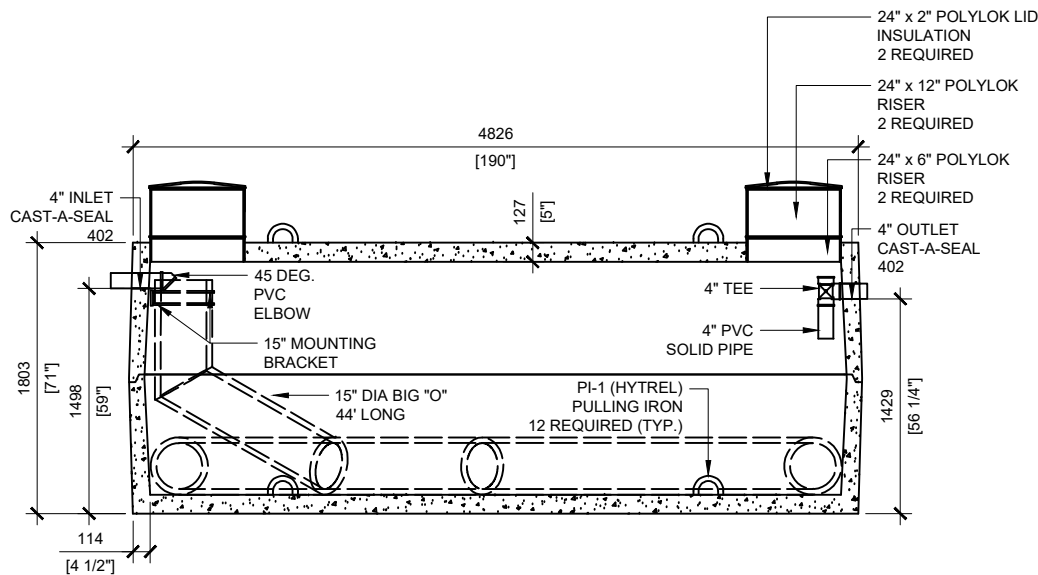


GENERAL NOTES:

1. UNITS ARE SEALED WITH BUTYL TAPE AT THE JOINTS
2. DELIVERY IS MADE BY CRANE-EQUIPPED TRUCKS
3. EXCAVATION MUST BE READY, SAFE AND ACCESSIBLE FOR UNLOADING FROM THE REAR OF THE TRUCK.
4. MIN OVERHEAD CLEARANCE OF 18FT (5.5 METRES) IS REQUIRED
5. ALL UNITS MUST BE HANDLED WITH PROPER LIFTING EQUIPMENT (I.E. SPREADER BAR)
6. MAXIMUM BURIAL DEPTH = 1 METRE IN FIRM SOIL AWAY FROM ANY VEHICULAR TRAFFIC



SECTION A
SCALE: 1/50

SECTION B
SCALE: 1/50



MANUFACTURED:
OTTAWA, ON
1-800-655-3430

CONCRETE TYPE: SCC
CONCRETE: 45MPa at 28 days/ 6,500PSI
AIR ENTRAINMENT: 5-8%
REINFORCEMENT: STEEL TO CSA CAN
 A23.1 /A23.3 G30.18 Fy=400MPa

WEIGHT:
 BOTTOM - 15,941lbs / 7,246kg
 TOP - 15,663lbs / 7,119kg
CSA APPROVED
 MEETS CAN/CSA-B66
 "AGINP"

DRAWN BY:
N.CHAN

DATE:
JUN/2020

WATERLOO AD-13650

3,000 IMPERIAL GALLON / 13,650 LITRES SINGLE CHAMBER