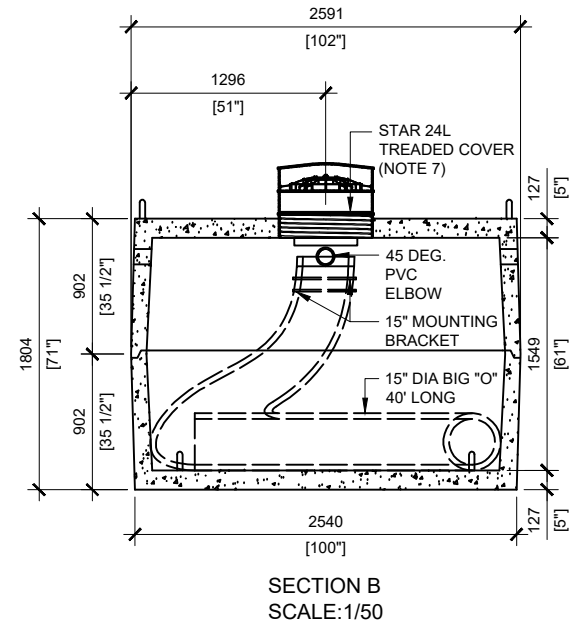
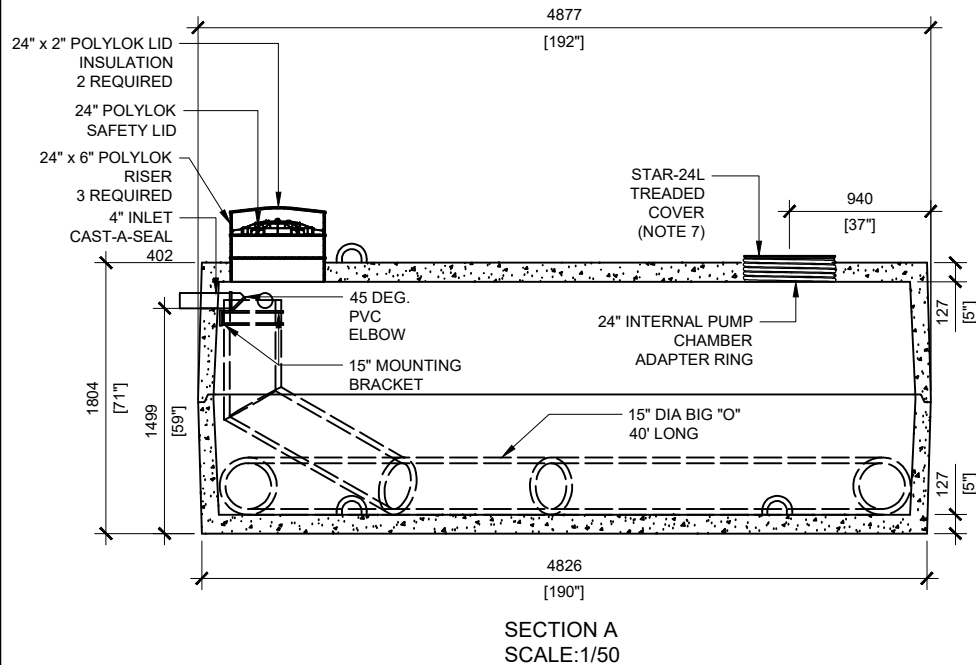


**GENERAL NOTES:**

1. UNITS ARE SEALED WITH BUTYL TAPE AT THE JOINTS
2. DELIVERY IS MADE BY CRANE-EQUIPPED TRUCKS
3. EXCAVATION MUST BE READY, SAFE AND ACCESSIBLE FOR UNLOADING FROM THE REAR OF THE TRUCK.
4. MIN OVERHEAD CLEARANCE OF 18FT (5.5 METRES) IS REQUIRED
5. ALL UNITS MUST BE HANDLED WITH PROPER LIFTING EQUIPMENT (I.E. SPREADER BAR)
6. MAXIMUM BURIAL DEPTH = 1 METRE IN FIRM SOIL AWAY FROM ANY VEHICULAR TRAFFIC
7. THREADED COVER TO BE REMOVED AND REPLACED BY INTERNAL PUMP CHAMBER (PROVIDED BY WATERLOO) ON SITE



**MANUFACTURED:**  
OTTAWA, ON  
1-800-655-3430

**CONCRETE TYPE:** SCC  
**CONCRETE:** 45MPa at 28 days / 6,500PSI  
**AIR ENTRAINMENT:** 5-8%  
**REINFORCEMENT:** STEEL TO CSA CAN  
A23.1 /A23.3 G30.18 Fy=400MPa

**WEIGHT:**  
BOTTOM - 17,712lbs / 8,050kg  
TOP - 17,571lbs / 7,989kg

**DRAWN BY:**  
JAY PATEL

**DATE:**  
JULY/2022

**WATERLOO ADIPC-14000**

14,000 LITRES