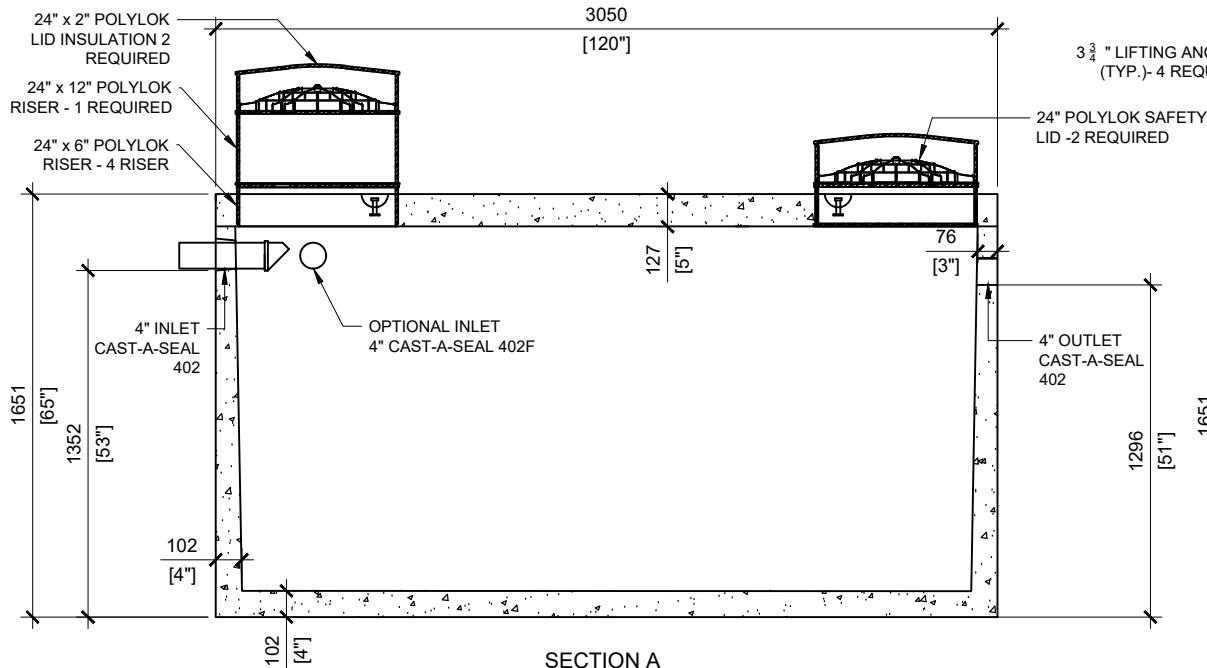


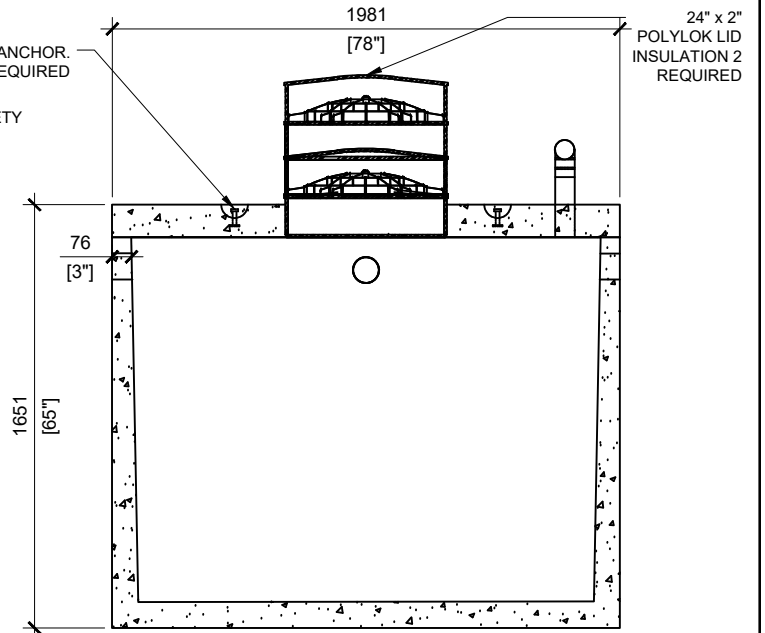
**GENERAL NOTES:**

1. UNITS ARE SEALED WITH "NON-TOXIC" BUTYL TAPE AT THE JOINTS
2. DELIVERY IS MADE BY CRANE-EQUIPPED TRUCKS
3. EXCAVATION MUST BE READY, SAFE AND ACCESSIBLE FOR UNLOADING FROM THE REAR OF THE TRUCK.
4. MIN OVERHEAD CLEARANCE OF 18FT (5.5 METRES) IS REQUIRED
5. ALL UNITS MUST BE HANDLED WITH PROPER LIFTING EQUIPMENT
6. MAXIMUM BURIAL DEPTH = 1 METRE IN FIRM SOIL AWAY FROM ANY VEHICULAR TRAFFIC
7. POLYLOK SAFETY LIDS INSTALLED IN BOTH OPENINGS AS PER CSA-B66-21
8. 24"x12" POLYLOK RISER WITH ELECTRICAL SPLICE BOX SUPPLIED BY WATERLOO AT THE OUTLET

TOP VIEW  
SCALE: 1/30



SECTION A  
SCALE: 1/30



SECTION B  
SCALE: 1/30



MANUFACTURED:  
LINDSAY, ON  
1-800-655-3430

CONCRETE: 35MPa / 5000PSI  
AIR ENTRAINMENT: 5-8%  
REINFORCEMENT: CSA CAN A23.1 / A23.3  
ASTM A1064

UNIT WEIGHT: 10,455lbs / 6,735kg

DRAWN BY:  
PRASHAN

DATE:  
MAR/2024

**WATERLOO PT-5500**

5,500 LITRES