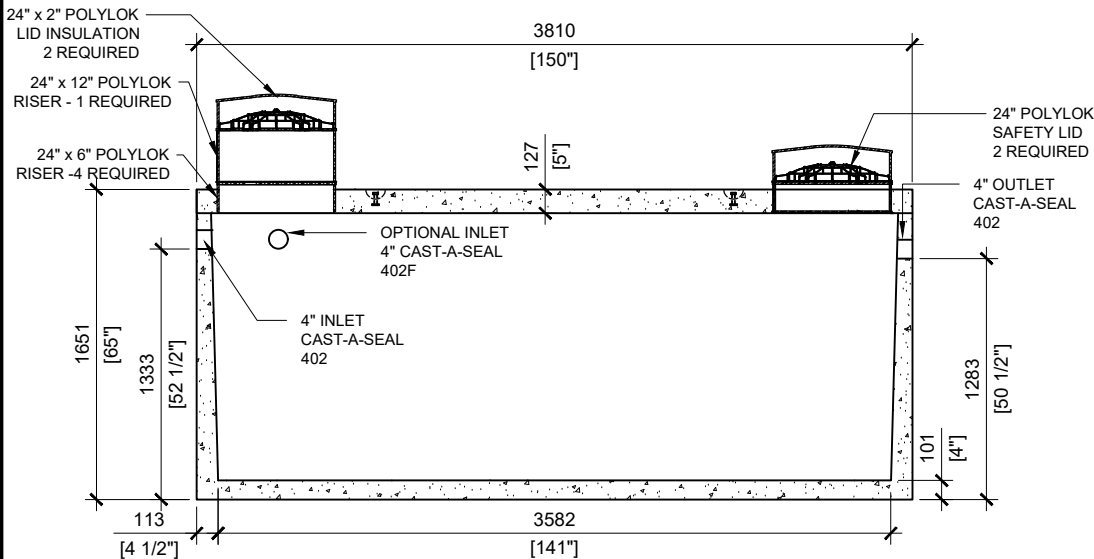
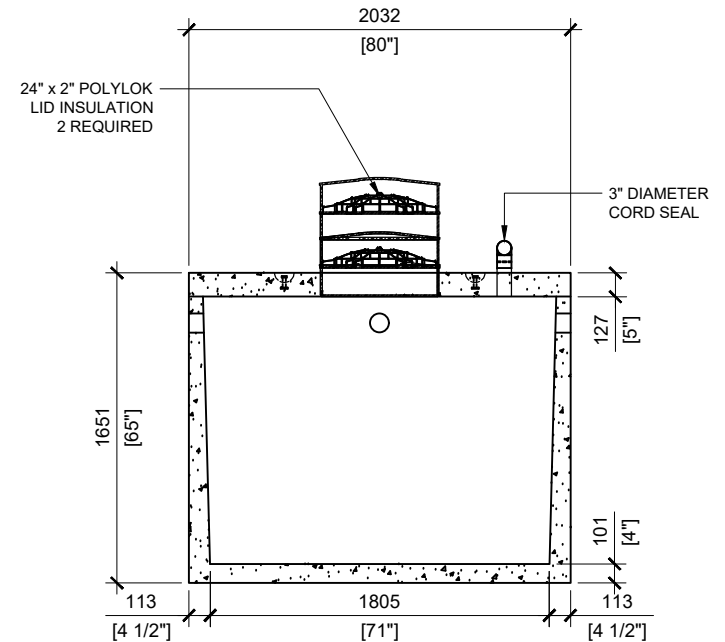


TOP VIEW  
SCALE:1/40



SECTION A  
SCALE:1/40



SECTION B  
SCALE:1/40

**GENERAL NOTES:**

1. UNITS ARE SEALED WITH "NON-TOXIC" BUTYL TAPE AT THE JOINTS
2. DELIVERY IS MADE BY CRANE-EQUIPPED TRUCKS
3. EXCAVATION MUST BE READY, SAFE AND ACCESSIBLE FOR UNLOADING FROM THE REAR OF THE TRUCK.
4. MIN OVERHEAD CLEARANCE OF 18FT (5.5 METRES) IS REQUIRED
5. ALL UNITS MUST BE HANDLED WITH PROPER LIFTING EQUIPMENT
6. MAXIMUM BURIAL DEPTH = 1 METRE IN FIRM SOIL AWAY FROM ANY VEHICULAR TRAFFIC
7. POLYLOK SAFETY LIDS INSTALLED IN BOTH OPENINGS AS PER CSA-B66-21
8. 24"x12" POLYLOK RISER WITH ELECTRICAL SPLICE BOX SUPPLIED BY WATERLOO AT THE OUTLET



MANUFACTURED:  
LINDSAY, ON  
1-800-655-3430

CONCRETE: 35MPa at 28 days/5000PSI  
AIR ENTRAINMENT: 5-8%  
REINFORCEMENT: STEEL TO CSA CAN  
A23.1 / A23.3 G30.18 Fy=400MPa

UNIT WEIGHT: 17,821lbs / 8,083kg  
TANK: 12,474lbs / 5,658kg  
LID: 5,347lbs / 2,425kg

DRAWN BY:  
PRASHAN

DATE:  
MAR/2024

**WATERLOO PT-7500**

7,500 LITRES