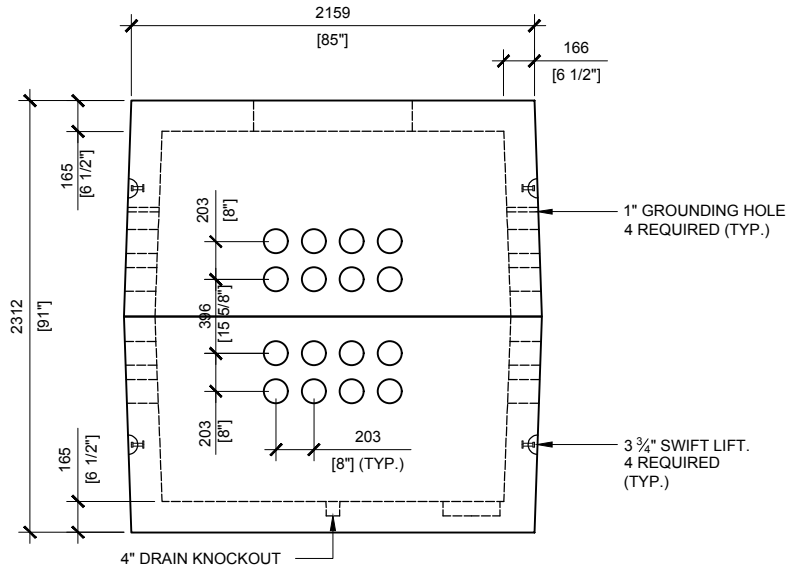
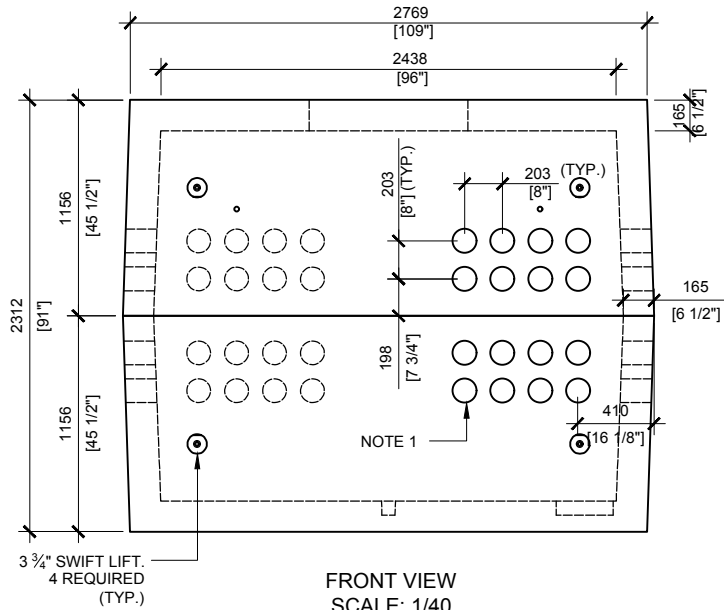


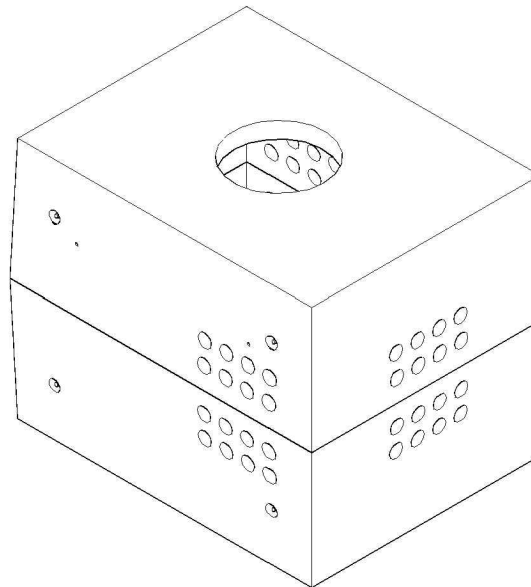
TOP VIEW  
SCALE: 1/40



RIGHT VIEW  
SCALE: 1/40



FRONT VIEW  
SCALE: 1/40



**GENERAL NOTES:**

1. CABLE ENTRY OPENINGS - 4-3/4" PVC SEALS
2. DELIVERY IS MADE BY CRANE-EQUIPPED TRUCKS
3. EXCAVATION MUST BE READY, SAFE AND ACCESSIBLE FOR UNLOADING FROM THE REAR OF THE TRUCK.
4. MIN OVERHEAD CLEARANCE OF 18FT IS REQUIRED
5. ALL UNITS MUST BE HANDLED WITH PROPER LIFTING EQUIPMENT (I.E. SPREADER BAR)
6. MAXIMUM BURIAL DEPTH 40"



MANUFACTURED BY:  
BROOKLIN, ON  
1-800-655-3430

CONCRETE: 35MPa / 5,000PSI  
AIR ENTRAINMENT: 6-8%  
REINFORCEMENT : STEEL TO CSA CAN  
A23.1 / A23.3. G30.18 Fy=400MPa

WEIGHT:  
BCP104H20 -25,100lbs / 11,400kg

DRAWN BY:  
S.RIMLAND

DATE:  
AUG/2017

**BCP104H20**

PRECAST CONCRETE UTILITY MANHOLE  
DESIGNED TO CL-625-ONT TRUCK LIVE LOADING AS PER CSA S6-14