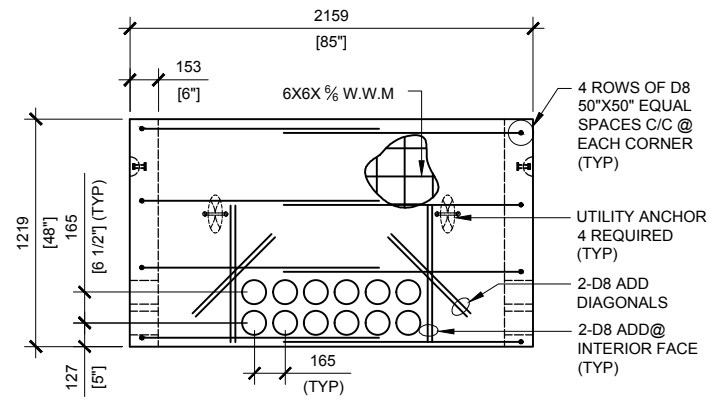
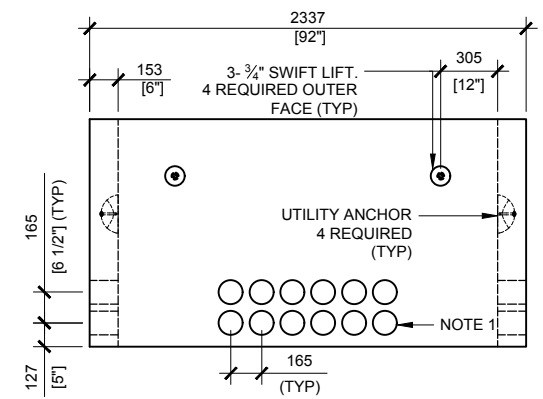


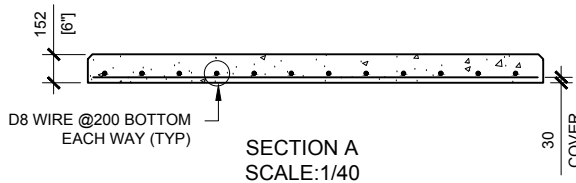
BCP400P TOP VIEW
SCALE:1/40



BCP400P RIGHT VIEW
SCALE:1/40

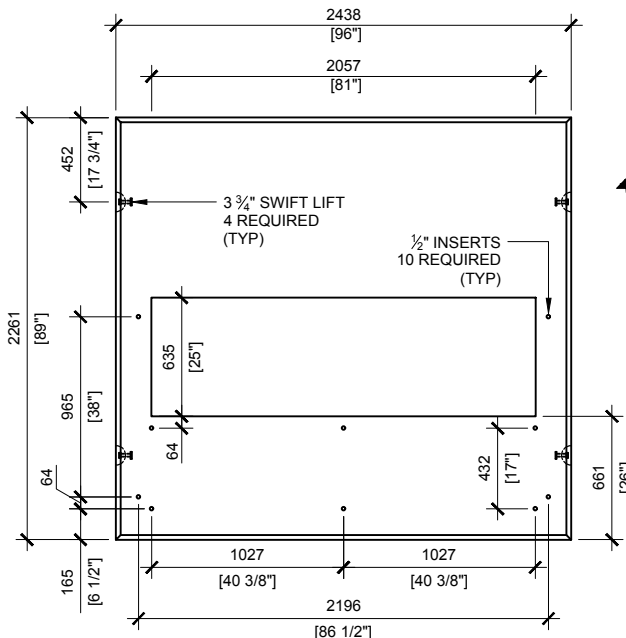
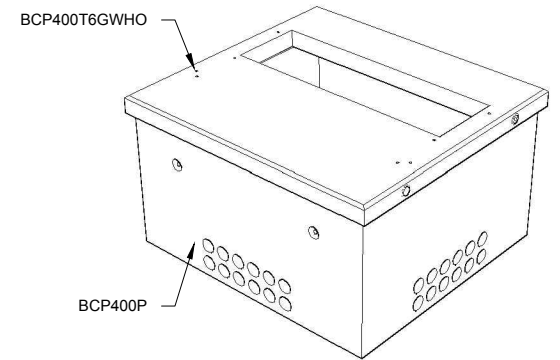


BCP400P FRONT VIEW
SCALE:1/40

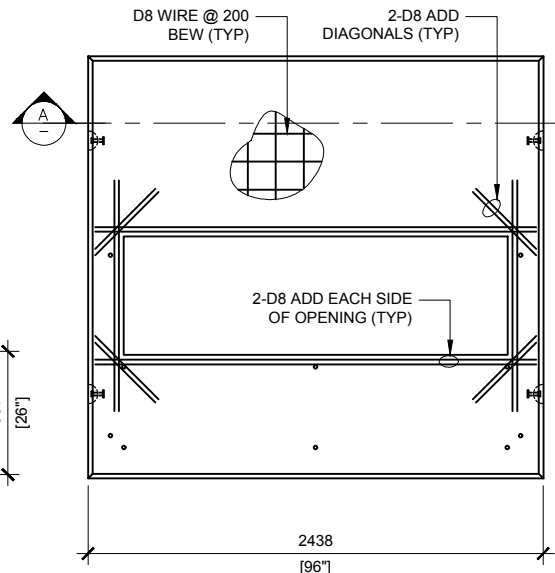


D8 WIRE @200 BOTTOM
EACH WAY (TYP)

SECTION A
SCALE:1/40



BCP400T6GWHO TOP VIEW
SCALE:1/40



BCP400T6GWHO REINFORCING
SCALE:1/40

GENERAL NOTES:

1. CABLE ENTRY OPENINGS - 4-3/4" PVC SEALS
2. DELIVERY IS MADE BY CRANE-EQUIPPED TRUCKS
3. EXCAVATION MUST BE READY, SAFE AND ACCESSIBLE FOR UNLOADING FROM THE REAR OF THE TRUCK.
4. MIN OVERHEAD CLEARANCE OF 18FT IS REQUIRED
5. ALL UNITS MUST BE HANDLED WITH PROPER LIFTING EQUIPMENT (I.E. SPREADER BAR)
6. FOR INSTALLATIONS ON STONE BEDDING, THE ALLOWABLE BEARING PRESSURE AT THE UNDERSIDE OF THE VAULT BOX SECTION SHALL BE A MINIMUM OF 150KPA (S.L.S.)
7. THIS BEARING PRESSURE IS ASSUMED AND SHALL BE CONFIRMED BY A QUALIFIED GEOTECHNICAL ENGINEER PRIOR TO INSTALLATION OF THE VAULT
8. THE TRANSFORMER SHOULD BE UNIFORMLY DISTRIBUTED AND THE EDGE OF THE TRANSFORMER BASE SHALL BE SET WITHIN 150MM OF THE INTERIOR DIMENSIONS FOR THE BASE
9. ALL EXPOSED EDGES TO HAVE 25MM CHAMFER

MAXIMUM LOAD CAPACITY:

- MAX. LINEAL LOAD ON TOP SLAB: 7kN/m (UNFACTORED)
- MAX. EQUIPMENT WEIGHT: 50kN (11,240LBS)



MANUFACTURED:
BROOKLIN, ON
1-800-655-3430

CONCRETE: 35MPa / 5,000PSI
AIR ENTRAINMENT: 6-8%
REINFORCEMENT : STEEL TO CSA CAN
A23.1 / A23.3. G30.18 Fy=400MPa

WEIGHT:
BCP400T6GWHO -3,300lbs / 1,500kg
BCP400P -7,700lbs / 3,500kg

DRAWN BY:
S.SRIMLAND

DATE:
AUG/2017

BCP400HO3P5W

INCLUDES: BCP400T6GWHO/ BCP400P